

# Quantitative visitor monitoring results application

**ONDŘEJ VÍTEK**

Nature Conservation Agency  
of the Czech Republic

---

V4 VIMOMA, 2022



# AUTOMATED COUNTERS

- since 2009
- monitoring profiles on roads, trails, paths, rivers
- 2 contractors
- detailed methodology
- interval 1 hour
- download 4x/year
- online database (Eco-Visio) since 2018
- 2016: 107 profiles, 2022: 49 profiles

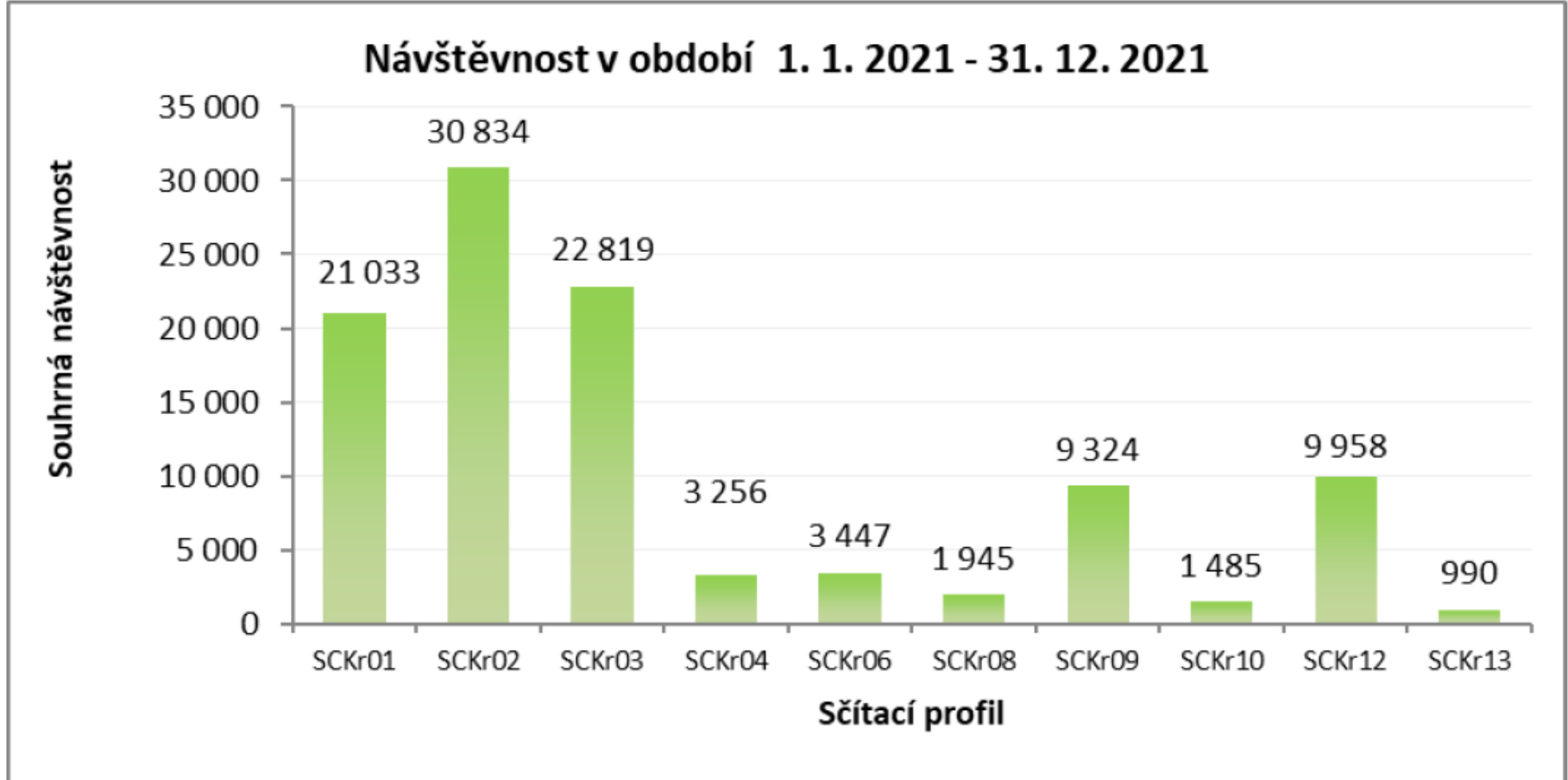


# WHERE

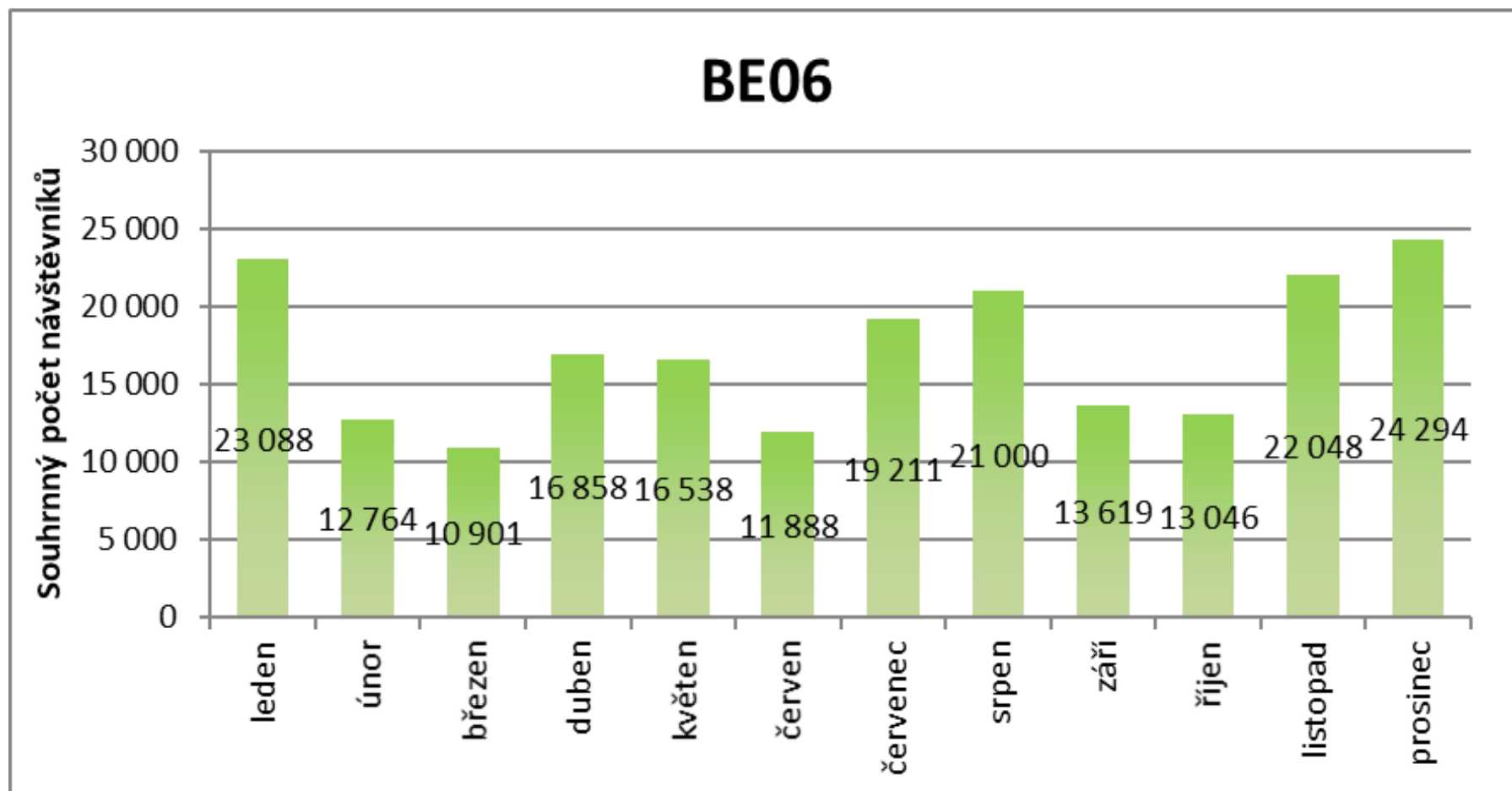
- places with high numbers of visitors
- areas with conflicts: with nature, with cultural monuments, among user groups
- places with restricted access
- visitor infrastructure



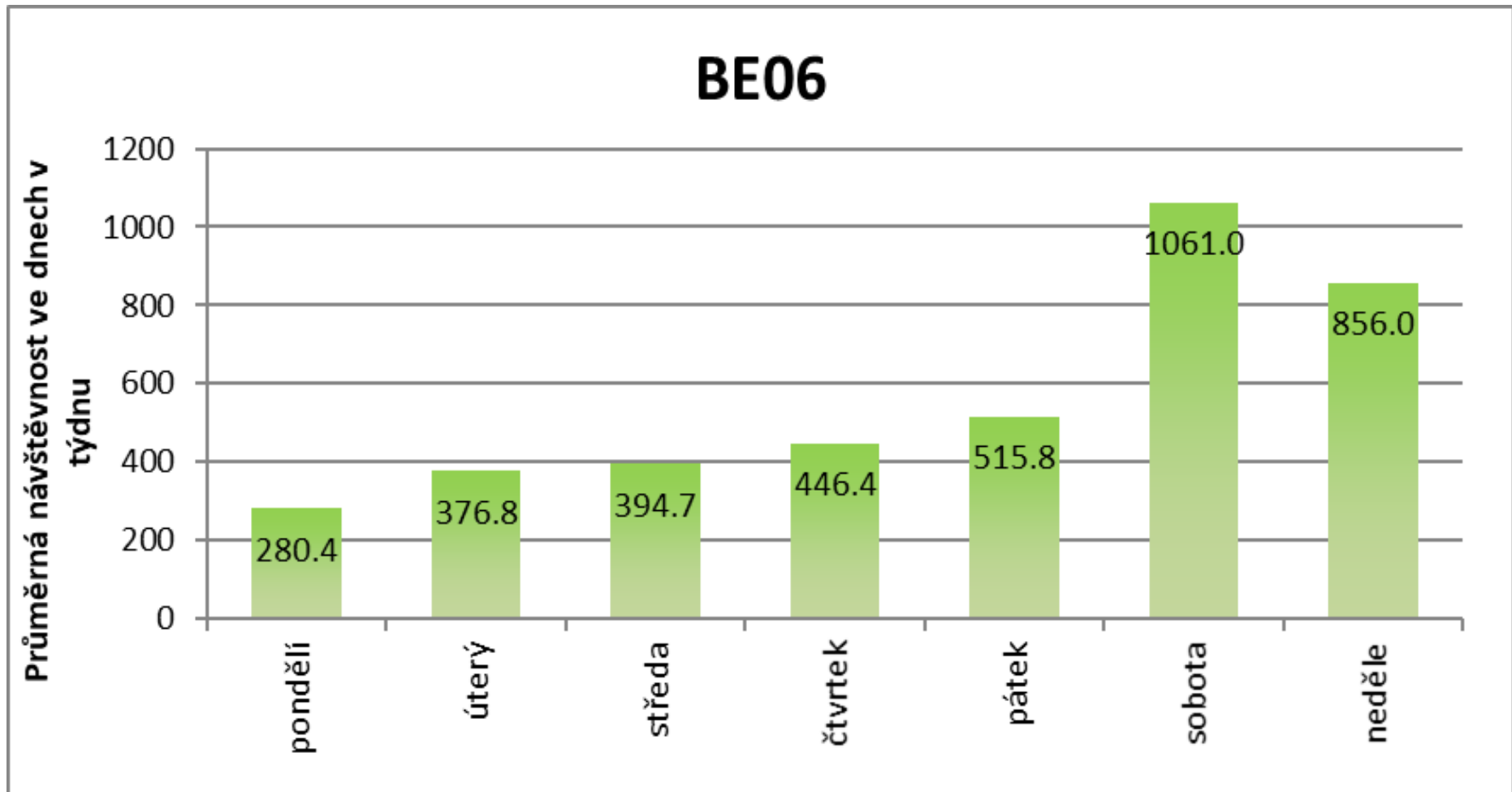
# OVERALL IMAGE OF VISITOR FLOWS



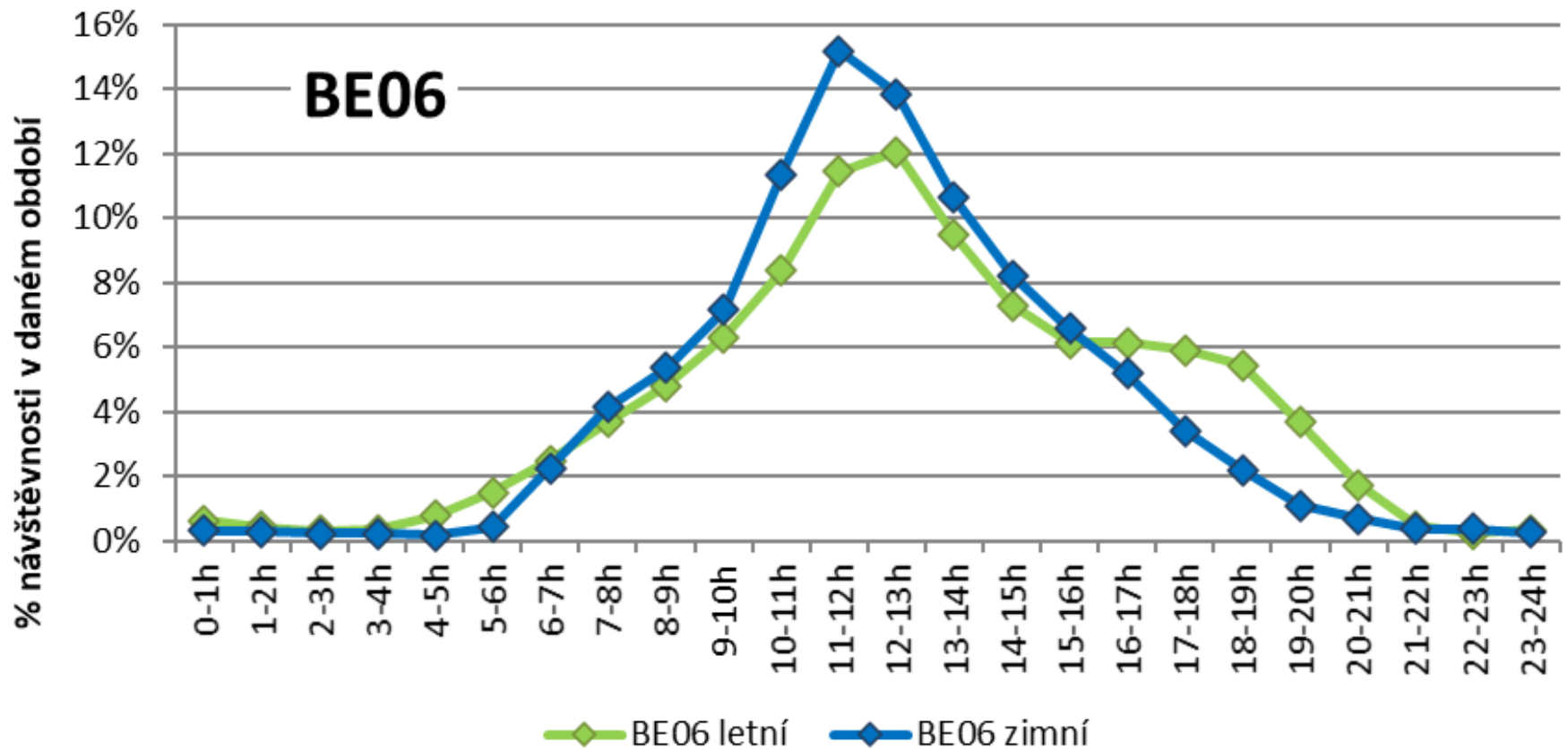
# OVERALL IMAGE OF VISITOR FLOWS



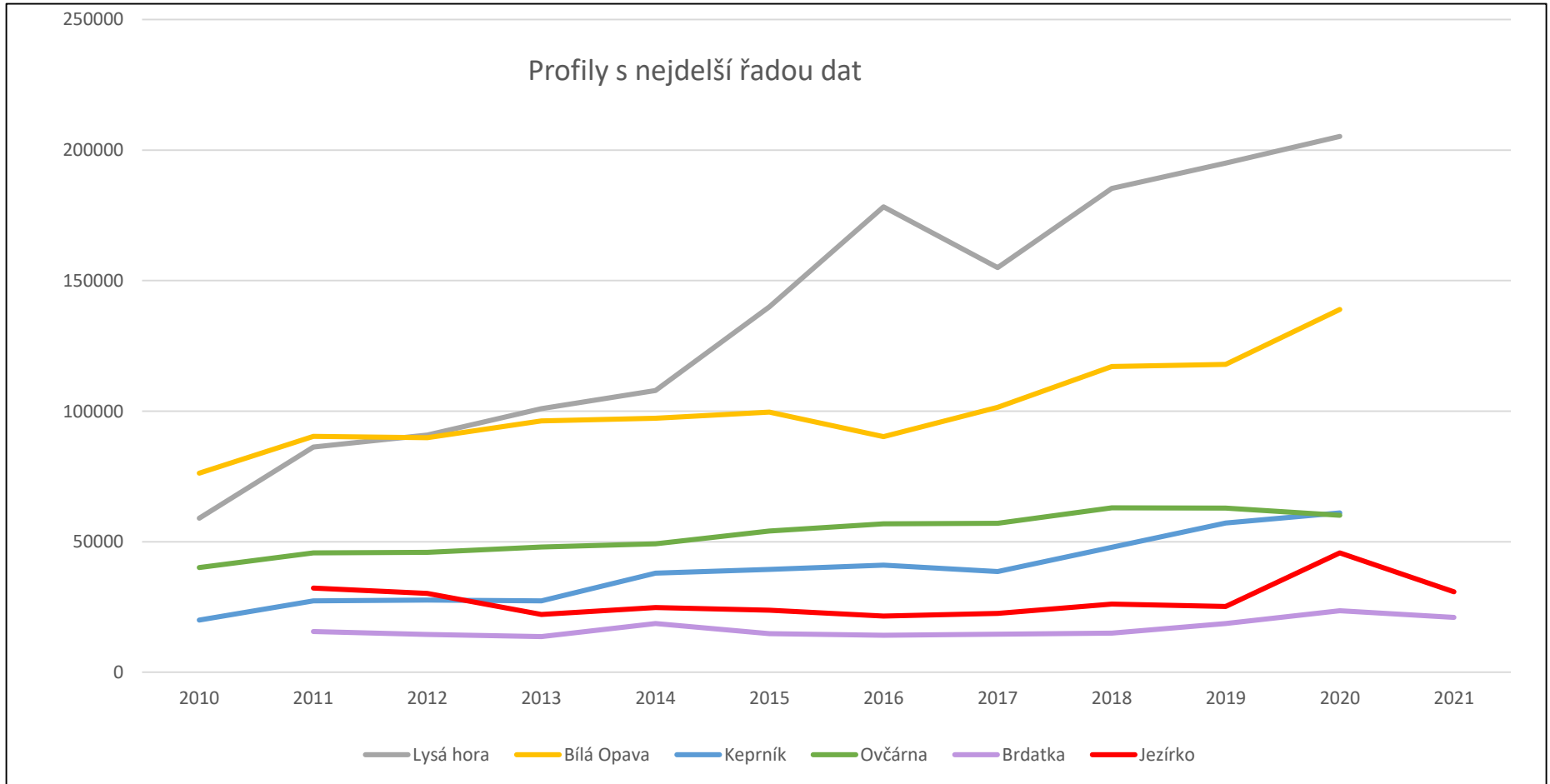
# OVERALL IMAGE OF VISITOR FLOWS



# OVERALL IMAGE OF VISITOR FLOWS



# TRENDS – LONG TIME SERIES

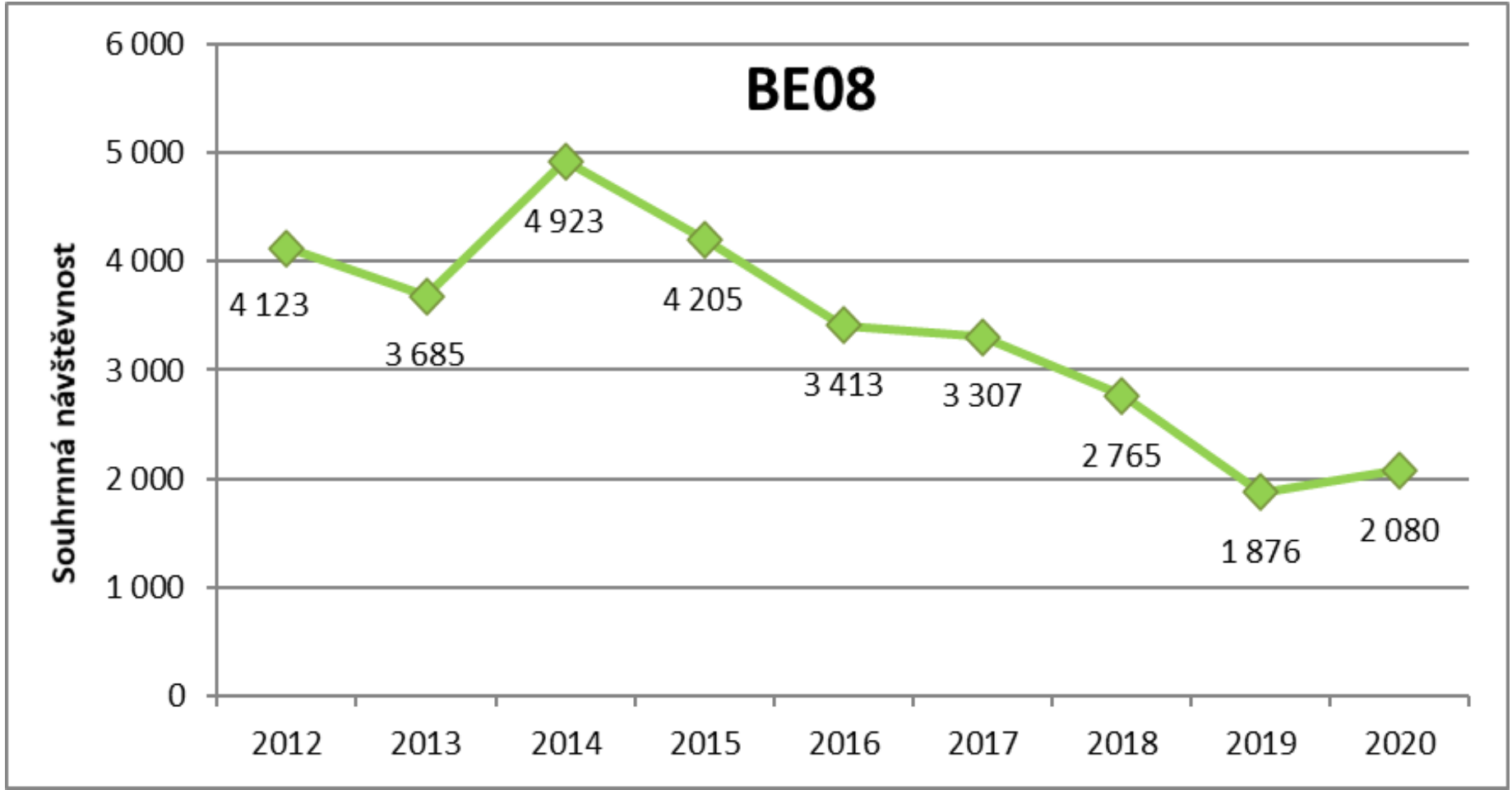


# ASSESSMENT OF CHANGES

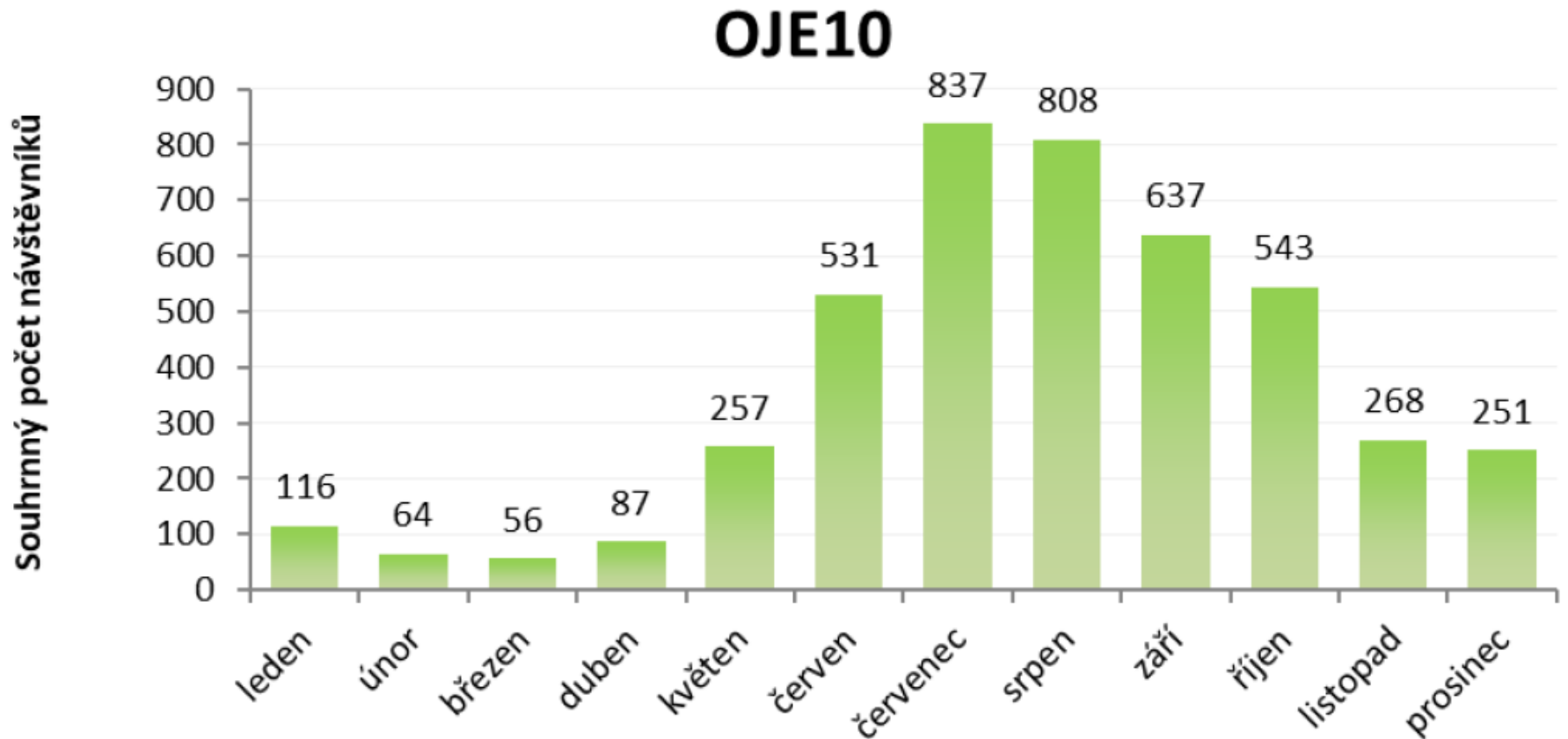
- Soutok proposed PLA/NP (incl. comparison to Pálava PLA)
- Křivoklátsko proposed NP
- Králický Sněžník – view tower



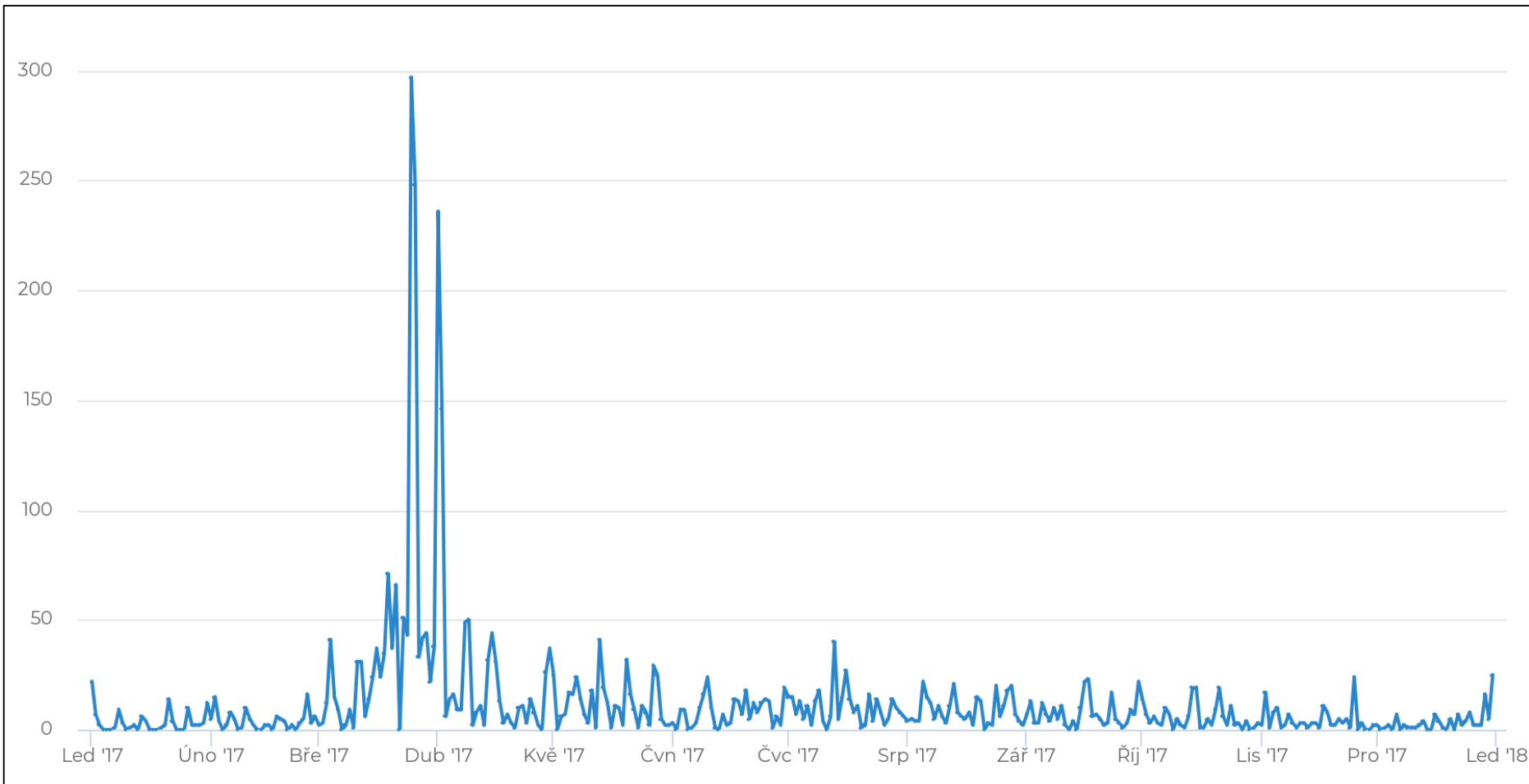
# TRAILS WITH PROHIBITED ACCESS



# PERMISSIONS FOR VEHICLES



# FLOWERWATCHING – YOU SAY THOUSANDS?



# NEGOTIATIONS

- Drbákov – Albertovy skály NNR: increased numbers – increased trampling and damage to infrastructure
- Kaňk NNM: short walks, costs of care for the landowner (Kutná Hora municipality), interpretation needs
- Velký Blaník: electricity for the view tower, access for cyclists, no intervention regime

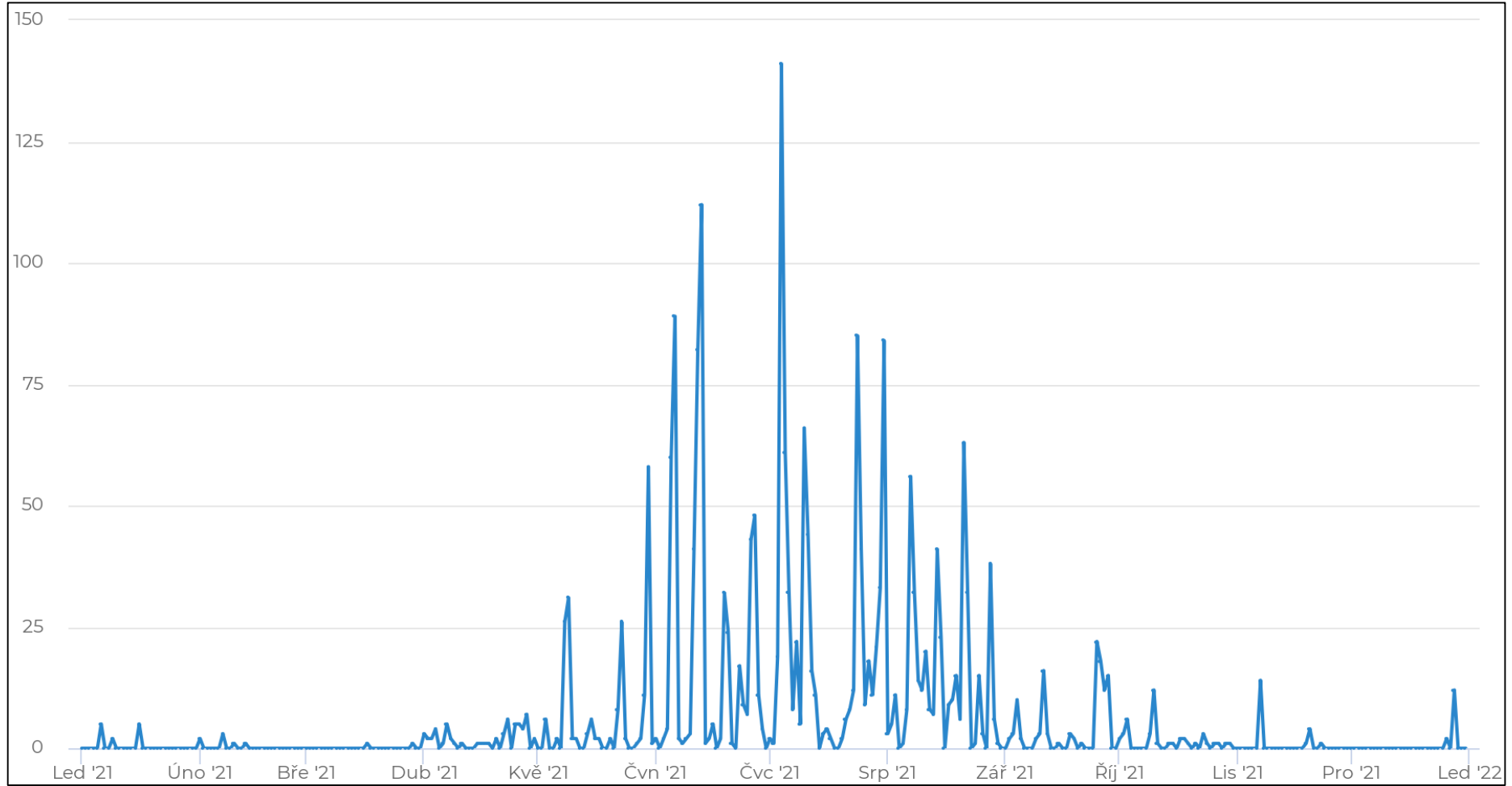


# NEGOTIATIONS

- Kobyla NR: Czech Mountaineering Union, change in visitor use
- Karlštejn NNR – Kubrychtova bouda: approval for converting a chalet to information point
- Karlštejn NNR – Svatý Jan pod Skalou: Sustainable tourism study
- Moravian Karst PLA – caves: adjusting visitor regime



# CANOEING SEASON



# CO-OPERATION

- visitor monitoring data in Eco-Visio database:  
Exchange, sharing, coordination





AGENTURA OCHRANY  
PŘÍRODY A KRAJINY  
ČESKÉ REPUBLIKY

**See you  
(in the dataset)!**

[ondrej.vitek@nature.cz](mailto:ondrej.vitek@nature.cz)

